



1) Mint 18" 1940's Mask Face 'Santa' - Artful bright color, clean mohair Wig, Beard & Leather Belt! \$295

2) Striking 21" Celebrity Portrait Doll of Princess Elizabeth - Pristine period clothes, shoes, wig; bl.sl. eyes, dewy sheen orig. Toddler plus her auth. 1950's Commemorative Medallion. Only \$1795

3) 12" Puss 'n Boots French Automaton - Beautiful clean Roulet et Decamps w sgnd. R.D. Key. He hammers the sole of his 'Boot' w vigor! \$2495



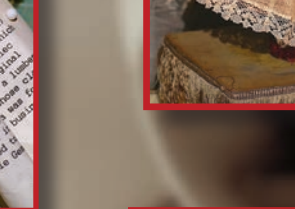
4) Precious & Rare Cabinet Jumeau Automaton - just 11" tall. (14" overall)! Closed Mouth, bl. PWs, holds tiny Mignonette & Mirror in her luxurious Original Couture & Chapeau! A small one!! \$4950

5) Adorable Wax 10" Christmas Angel - gl. eyes, All Original Wig to Shoes w/ golden Dresden decor incl Wings! \$750

6) Unusual 12" Mache Mechanical - excellent cond., orig. clothes, mechanical leather arms & Written Owners History spanning 3 generations! \$650

7) Antique Blown Glass Ornament - 7" 'Hot Air Balloon' w gold metallic filigree & net decor. Delicate & rare! \$250

8) Large Breathtaking Heubach Pair - rare 9" Authentic, Mint & lifelike children bookends for your mantle. \$850



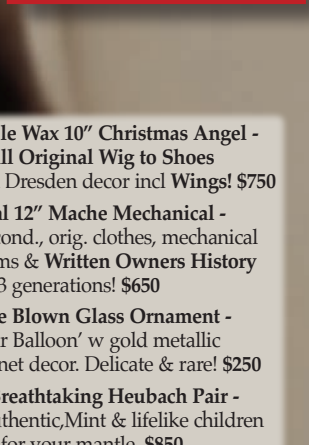
Matrix

(212) 787-7279
P.O. Box 1410
NY, NY 10023

Quality Antique Dolls by Mail
Return Privilege • Layaways
Member UFDC & NADDA

matrixbymail@gmail.com

PayPal
MasterCard VISA





9) Luscious Kestner Pouty - 14" Sugar Plum w oily sheen, full Closed Lips, Orig. Wig, Pate & mint Stiff Wrist body in period finery. Concealed flaw. Not \$2000 just \$895

10) Super Rare 16" 'Klien-Mammi' Toddler - K*R 171, stuffed jtd. body, Period Clothes, top quality. Not \$3000 just \$1495



11) Palm Size 'Laughing Jumeau' - 12" long SFBJ '236' baby, choice quality bon-bon in pretty Factory Clothes! \$495



12) 24" Kestner '214' Character - perfect satin bisque, long cheeks, lovely Period Clothes & Wig. Only \$450

13) Pint Size 13" Simon Halbig - fully jtd. body, Orig. dense Wig, Shoes & lovely old Holiday Ensemble \$350



14) A Large & Coveted Heubach - 8.5" Child Playing w Doll. A compelling rendition of a focused child fussing lovingly over her doll. Hyper rare, near perfect Not \$2500 just \$1495

15) Set of 7-Dwarf Candy Containers - ca: 1950, 'Made in Germany' tags, w tree hanger loops too! Sparkling \$250

16) Lifelike 31" Heirloom Kestner Christmas Doll - exquisite Mint, satin bisque and clean Signed body! Beautiful antique mint Wig in Period Winter Wool Ensemble plus Muff & Shoes. To sit by the tree! \$750

17) 14" Kruse Type in Factory Clothes - unusual compo body w jtd. hands, innocent face, mint felt Tunic & Leggings. \$650; Unusual Black Platform Horse - 8" t, no hair loss, great mane, tail & other details! Handsome. \$295; Cabinet Size Cart - 6" t. orig. clean paint, stenciled "Coal". \$325



18) Unplayed 16" Schoenhut Youth - lovely complexion, no craze, great modeling, dandy 3-piece Suit plus Hat. Original Mohair Wig & early mark. Ribbon Winner! \$2500





19) Early 21" Pink Tint Kestner - 1840's creamy color, blue eyes, great homemade body jtd. to sit. Early 3/4 porc. Arms! \$450

20) Elegant Poupee - see #24

21) Grand Poupee - see #25

22) A 21" Attic Original 1860's Wooden - A very rare Queen Victoria on her Original Leather Fashion Body in layers of dramatic silk taffeta & lace. Historic rare Victoria with expected paint flakes. Not ~~\$3000~~ just \$1250



Matrix

(212) 787-7279
P.O. Box 1410
NY, NY 10023

Quality Antique Dolls by Mail
Return Privilege • Layaways
Member UFDC & NADDA
matrixbymail@gmail.com



23) Extravagant 27" French China - such ladylike grandeur with her Flesh Tinted heart shaped features on her French Fashion Body wrapped in her vintage Ribbed Silk Bustled Gown. Spectacular! \$3250

24) 24" Stately Jumeau Poupee 'Clothilde' - direct from Paris, in storage for 40 years, a magnificent portrait of a mademoiselle, signed. Jumeau body, glistening bisque, glimmering brown PWs. Such romance. \$3250

25) Elegant 20" Couture Fashion - Perfect ivory bisque, ice blue PWs, orig. Cork Pate, fabric Body & leather Arms. Snowy complexion & heirloom Silk Gown. Ethereal Beauty \$1850

26) 16" & 11" Grodnertal Woodens - All Original bodies & clothes w clean & pretty faces. \$495 & \$250

27) Elusive Brown 21" Bebe Jumeau - rich fired in color, huge PWs, cold painted brows, Orig. Body & Neck Coil beneath her antique velvet Party Dress. \$2500

